



# EBP Programme Summary

2024/2025

THE GATSBY BENCHMARKS  
GOOD CAREER GUIDANCE

## How our programmes can support you to deliver against the Gatsby Benchmarks & the Baker Clause:

	BM 1	BM 2	BM 3	BM 4	BM 5	BM 6	BM 7	BM 8*	Baker Clause
<b>Self Development</b>									
AI: The Big Debate					x				
All About Me				x	x				
Dealing with Anxiety					x				
Developing Life Skills				x	x				
Discover My Future				x	x				
Financial Awareness: Cost of Living			x	x	x				
Financial Awareness: Cost of University			x	x	x				
Growth Mindset				x	x				
Mentoring Programme				x	x				
People Like Me				x	x				
Preparing For Work: Pick & Mix		x		x	x				
Preparing For Work: Work Experience		x		x	x	x		x	
T Level Workshop Package			x	x	x				
<b>Sector Insight</b>									
Guess My Job		x		x	x				
Spotlight on Careers		x	x	x	x	x			
Spotlight on Careers (Baker Clause Specific)		x	x	x	x	x			x

Continued overleaf

## How our programmes can support you to deliver against the Gatsby Benchmarks & the Baker Clause:

	BM 1	BM 2	BM 3	BM 4	BM 5	BM 6	BM 7	BM 8*	Baker Clause
<b>Interview Prep</b>									
Mock Interviews		x		x	x				
Interview Techniques				x	x				
CV and Personal Statement Writing				x	x				
<b>Enterprise Events</b>									
Champions of Enterprise		x		x	x				
Cultivate		x		x	x	x			
Scrap Challenge				x	x				
Saturday Night Challenge				x	x				
Get Shirty		x		x	x				



\*EBP is partnering with Adviza to lead on Gatsby 8 – Personal Guidance.

Adviza is a charity, delivering impartial, professional Careers Guidance. We have a very individual approach and to that end if you would like a free consultation with our Head of Delivery to discuss your needs, please email [sandrareynolds@adviza.org.uk](mailto:sandrareynolds@adviza.org.uk)

## Workshops available for 2024/2025

\*\*Suitable for SEN students. Please contact us with your requirements.

Self Development	Description	Target Year Group	No. of students per session	Timings	Gatsby Benchmarks	Employer Support
AI: The Big Debate	The workshop aims to engage students in critical discussions about the ethical aspects of artificial intelligence, enhancing their understanding of the complexities and implications of AI technologies.	Years 9-13	Min 1 class Max whole year	1 hour	5	Supported by Business Ambassadors
All About Me **	This workshop gives students the opportunity to complete a skills audit to help them identify and articulate the skills they have developed during school/college and extracurricular activities. The workshop helps students to link skills to those desired by employers and frame answers to interview questions.	Years 9-13	Min 1 class, max whole year	1 hour	4 & 5	2 - 3 Business Ambassadors
Dealing with Anxiety**	This workshop will provide students with information, tips and strategies they need to tackle anxiety with greater assurance. The session explores the different types of anxiety and basic coping mechanisms for students to help understand these feelings and start to think of ways to work through anxiety issues.	Years 9-13	Min 1 class Max whole year	1 hour	5	Supported by Business Ambassadors

Self Development	Description	Target Year Group	No. of students per session	Timings	Gatsby Benchmarks	Employer Support
Developing Life Skills **	A full day, drama-based, actor-led workshop for groups of students. Activities are designed to build students' confidence, improve body language and impact. EBP liaise with schools to identify participants who will benefit most from the activities (students who lack confidence and need support to fulfil their potential).	Years 9-13	Min 15 - Max 20	The whole school day	4 & 5	Led by The Watermill Theatre
Discover My Future	Groups of students participate in a series of workshops during a school half term. Workshops focus on supporting students to identify and articulate their strengths, gain understanding of the types of careers their strengths would suit, understand the importance of developing a professional network and identifying people who will speak up on your behalf and vouch for you.	Year 12 & 13	Min 20 - Max 30	1 hour sessions x 4	4&5	2 - 3 Business Ambassadors
Financial Awareness: Cost of Living **	It's never too early to learn the value of money, how much things cost, how to plan and budget, salary expectations for different career paths and how much you need to earn to fund your preferred lifestyle. Our Financial Awareness programme has been developed for students in Year 7/8 and aims to increase student's financial awareness and understanding. The workshop engages students and helps them realise that choices made now can make a real difference to their standard of living in adult life.	Year 7 & 8	Min 30 - Max whole year group	1 hour	3,4 & 5	2 - 3 Business Ambassadors

Self Development	Description	Target Year Group	No. of students per session	Timings	Gatsby Benchmarks	Employer Support
Financial Awareness: Cost of University	<p>A workshop (delivered virtually or face-to-face) helping students to gain an understanding of:</p> <ul style="list-style-type: none"> <li>• University Tuition Fees and Maintenance Loans available</li> <li>• How you can afford to live &amp; budget on a Maintenance Loan</li> <li>• How you repay these loans - if you earn enough - after leaving University and once you're employed</li> </ul>	Year 12 & 13	Min 30 - Max whole year group	1 hour	3,4 & 5	2 - 3 Business Ambassadors
Growth Mindset **	<p>This workshop explores what Growth Mindset is and why it is important to develop both academically and emotionally. Young people learn that intelligence can be developed, understand that effort is the key to success and that challenge should be met without fear.</p>	Year 10 - 13	Min 30 - Max whole year group	1 hour	4 & 5	2 - 3 Business Ambassadors

Self Development	Description	Target Year Group	No. of students per session	Timings	Gatsby Benchmarks	Employer Support
Mentoring Programme **	<p>At the Education Business Partnership, we believe that every young person deserves opportunity. The EBP can provide one-to-one mentors for Year 11 students who may need additional support and encouragement in realising their Post 16 goals. Students may have been previously identified as unlikely to gain access to local Further Education provision, due to their behavioural backgrounds and/or education history. By engaging in this project, the students will have the opportunity to reflect on their educational journey to date, their career goals and aspirations and prepare themselves for any future admission panel applications. A mentor will be tailor-matched with the student and at least 4 meetings will be scheduled across the project consisting of face-to-face and online sessions. All meetings will be supervised by a member of school staff and mentors will be fully briefed prior to meeting the student. Additional meetings can occur at the agreement of the mentor, student and a supervising teacher.</p>	Year 9-12	Up to 15	1 hour	4 & 5	The number of Business Ambassadors will depend on the number of students

Self Development	Description	Target Year Group	No. of students per session	Timings	Gatsby Benchmarks	Employer Support
People Like Me **	This workshop (delivered virtually or face-to-face) during which students complete a questionnaire which uses their skills and strengths to form a profile of themselves. This profile is then used to identify/suggest the roles/areas within STEM careers that the student would be best suited to.	Year 7-13	Min 30 - Max whole year group	1 Hour	4 & 5	2 - 3 Business Ambassadors
Preparing For Work: Pick & Mix **	Students benefit from sessions such as All About Me, Growth Mindset, Labour Market Information, Interview Techniques, People Like Me, Sector Insight, Financial Awareness Cost of Living, Health and Safety in the Workplace.	Year 10 - 13	Min 30 - Max whole year group	1 Hour	2,4 & 5	2 - 3 Business Ambassadors



Self Development	Description	Target Year Group	No. of students per session	Timings	Gatsby Benchmarks	Employer Support
Preparing For Work (Work Experience) Option A **	A series of workshops over a <b>6-week</b> period which will help students to increase confidence, understand their skill sets, prepare for interviews and undertake a practice interview, show resilience, learn about the local labour market and go on site visits. This will culminate in an extended work placement which includes mentoring sessions.	Year 9 - 11	15-25	Variable between 1 hr to a whole school day	2, 4, 5, 6, 8	Watermill Theatre / Business Ambassadors as required
Preparing For Work (Work Experience) Option B **	A series of workshops over a <b>4-week</b> period which will help students to increase confidence, understand their skill sets, prepare for interviews and undertake a practice interview, show resilience, learn about the local labour market and go on site visits. This will culminate in an extended work placement which includes mentoring sessions.	Year 9 - 11	5-15	Half a school day per week	2, 4, 5, 6, 8	Business Ambassadors as required

Self Development	Description	Target Year Group	No. of students per session	Timings	Gatsby Benchmarks	Employer Support
T Level Workshop Package **	<p>Our T Level workshop package has been developed with learning providers and employers, to support students to meet course criteria and give them a head start in working towards getting a skilled occupation. Our offer is a rich mix of skills evaluation and development, and employer expectations. All workshops and events are supported by business people to offer their knowledge and expertise and give students a chance to network with industry professionals.</p> <p>All the workshops (listed below) are one-hour workshops, with up to 100 students in each workshop:</p> <ul style="list-style-type: none"> <li>• All about Me</li> <li>• CV Writing</li> <li>• Interview Prep</li> <li>• Employer Expectation</li> </ul> <p>We can also offer Mock Interviews (sector specific), for up to 20 students in a 1-hour workshop.</p> <p>Finally, we can offer a sector specific Spotlight on Careers workshop for up to 30 students in a half day workshop.</p>	Year 12-13	See description	See description	3, 4 & 5	Business Ambassadors

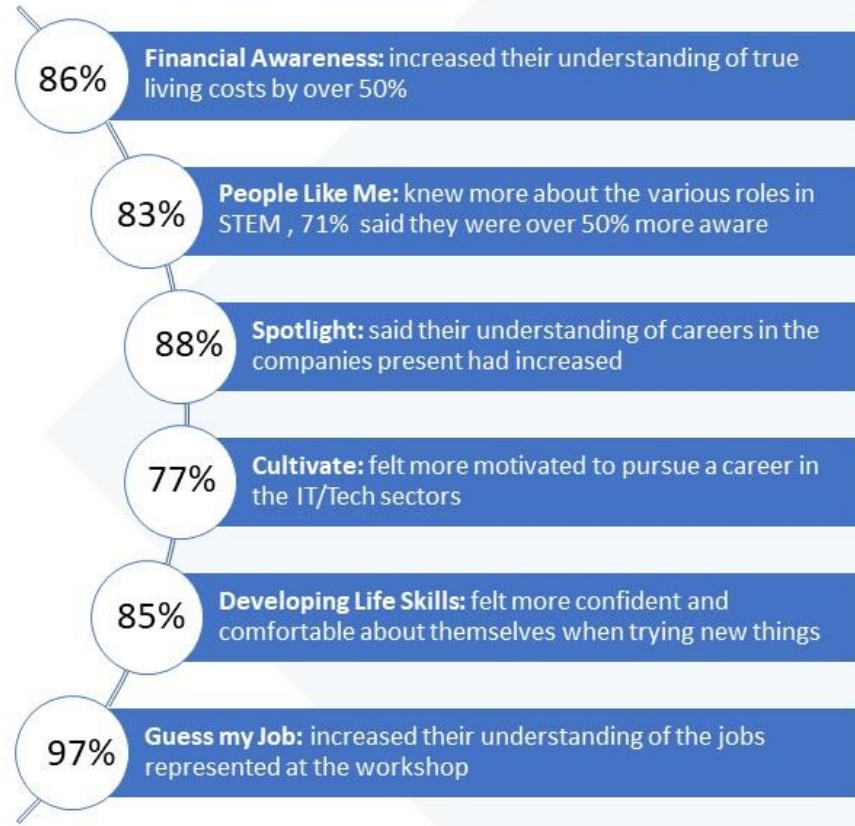
Sector Insight	Description	Target Year Group	No. of students per session	Timings	Gatsby Benchmarks	Employer Support
Guess My Job **	Students are able to ask business volunteers questions and they can only initially answer Yes or No. Students have to use the answers to guess what the volunteers do for a living. This supports their understanding of different jobs and often challenges stereotypes. Once the initial five minutes are up the volunteers will have five minutes to tell the students about their career and answer any questions the students may have.	Year 7-13	Min 30 - Max whole year group	1 Hour	2,4 & 5	8-10 Business Ambassadors
Spotlight on Careers **	A full day in school with 4 different businesses attending. Four groups of 25-30 students, carousel around each organisation throughout the day.	Year 7 - 13	Min 75 - Max whole year group	Full school day	2,4,5,6, & 8	4 Local businesses
Spotlight on Careers (Baker Clause Specific) **	A full day in school with 4 different businesses attending. Four groups of 25-30 students carousel around each organisation throughout the day. This workshop is designed to support you to deliver against the Baker Clause which states “schools must allow colleges and training providers access to every student in years 8 to 13 to discuss non-academic routes. It also states that schools need to impartially promote the full range of technical education qualifications and apprenticeships”.	Year 7 - 13	Min 75 - Max whole year group	Full school day	2,4,5,6, & 8	4 Local businesses who offer apprenticeships

Interview Prep	Description	Target Year Group	No. of Students Per Session	Timings	Gatsby Benchmarks	Employer Support
Mock Interviews **	Multiple business volunteers in attendance to enable each student within the year group to participate in a 15-20 min interview slot (which includes feedback from the interviewer).	Year 10 - 13	Min - 50 Max a whole year group	Full school day	2,4 & 5	18 - 22 Business Ambassadors
Interview Techniques **	This workshop helps students to practice interview techniques and benefit from hints and tips about preparing examples and answers. The content helps students to understand the importance of body language and dress code and covers face-to-face and video interviews.	Year 10 - 13	Min - 50 Max a whole year group	Full school day	2,4 & 5	6 - 8 Business Ambassadors
CV and Personal Statement Writing **	The purpose of this workshop is to support students to feel confident about entering the world of work and the initial process to finding employment. A vital first step to this is how to showcase their skills, interests and experience by creating a dynamic CV. Students will also look at how to write a personal statement and learning its purpose and significance.	Year 9 - 13	Min 50 Max a whole year group	1 hour (1.5 hours for SEN groups)	4 & 5	3 – 8 Business Volunteers

Enterprise Events	Description	Target Year Group	No. of students per session	Timings	Gatsby Benchmarks	Employer Support
Champions of Enterprise (Waitrose) **	Students are presented with a real-life business challenge to work on in teams. Each team presents their recommendations to a panel of judges and winners are selected. Teams are supported by business volunteers throughout the challenge.	Year 10 - 13	Min - 50 Max a whole year group	Full school day	2,4 & 5	6 - 8 Business Ambassadors
Cultivate	Cultivate is open to anyone in Year 7 to 13 and helps students develop their business understanding and potential. Workshops cover business planning and presentation skills along with one-to-one mentoring to help young people to develop skills and experience in early business start-up.	Year 7 - 13	Min - 50 Max a whole year group	Full school day	2,4 & 5	6 - 8 Business Ambassadors
Scrap Challenge **	Students will work in a team; they will become a company that will develop a new product or service to sell using 'stuff' that other people don't want or need anymore. It doesn't have to be expensive or big, but it must be something that people will want to buy so that it makes you money! A winning product/service will be chosen from all of the teams.	Year 7 - 13	Min - 50 Max a whole year group	Full school day	2,4 & 5	6 - 8 Business Ambassadors

Enterprise Events	Description	Target Year Group	No. of students per session	Timings	Gatsby Benchmarks	Employer Support
Saturday Night Challenge **	Students will work in teams; they have to take charge and organise an event within their school on a Saturday night for the local community. They will have to communicate well with their other team members to make this work. They may want to look at what's lacking for young people in their local area.	Year 7 - 13	Min - 50 Max a whole year group	Full school day	2,4 & 5	6 - 8 Business Ambassadors
Get Shirty **	Students will spend the day with business volunteers, developing ideas and producing a comprehensive business plan for an independent t-shirt manufacturing company.	Year 7 - 13	Min - 50 Max a whole year group	Full school day	2,4 & 5	6 - 8 Business Ambassadors
Site Visits **	We can organise business site visits for you. You may have students who are particularly keen on a certain industry sector, and it is always useful for students to visit a venue to get a glimpse of what goes on in a work place. We have previously organised these site visits for small groups of students.	Year 7 - 13	Min 30 - Max whole year group	Timings can vary	2,4,5 & 6	1 Local business
Industry Speakers **	We can organise for speakers from a range of different industries to come into your schools, to present to students in assemblies or in lessons. The cost for this does vary so please do contact EBP for more information.	Year 7 - 13	Min 30 - Max whole year group	Timings can vary	2,4,5 & 6	Various businesses

Key impact data from all secondary programmes 2023/2024



**We would be thrilled to have the opportunity to discuss how our expertise can tailor bespoke experiences specifically for your institution. Allow us to design unique events that align with your educational objectives, igniting a dynamic learning experience for your students.**

**For any more details about any of our programmes, please contact:**

**Lesley Stewart**

**Developing Skills Team Manager**

**[Lesleys@ebp.org.uk](mailto:Lesleys@ebp.org.uk)**

**01635 279277**



[www.educationbusinesspartnership.co.uk](http://www.educationbusinesspartnership.co.uk)



Shaw House  
Church Road  
Newbury  
Berkshire  
RG14 2DR  
Phone: 01635 279277  
[info@ebp.org.uk](mailto:info@ebp.org.uk)